



For further information you can contact our Service Office at +393351246177 or by e-mail by writing to [service@dmindustrial.it](mailto:service@dmindustrial.it)

## WIRE HEATER

- Induction heating device, complete with generator and cooler, designed to heat the wire before being moulded.



## ULTRASOUND WASH TANK

- Dimensions: 750 x 650 x 850 h mm  
Tank capacity: 110 lt  
Heating with temperature regulation: 0 - 75° C  
Power: 900/1800 W 40 KHz



## ULTRASOUND WASH TANK

- Water Temperature controller Piovan TW9, for temperatures up to 90° C, 9 kW heating power, with 21Kw exchanger (Cooling capacity Q = 15 l/min, cool. Water temp. = 10° C and mould inlet temp. = 80° C).



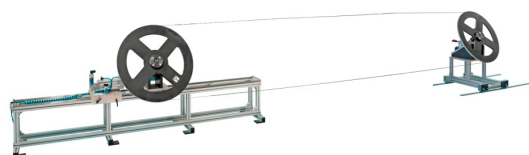
## DRYING SYSTEM

- Dehumidifying dryer Piovan DS503, with a single desiccant tower and a single blower for both drying and regeneration processes.



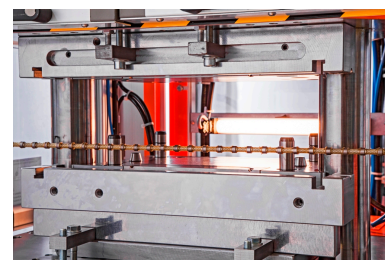
## TENSIONING DEVICE FOR DIAMOND WIRE

- Tensioning system suitable for closed-loop diamond wire from 15 to 30 meters with manual loading and manual movement from left to right.



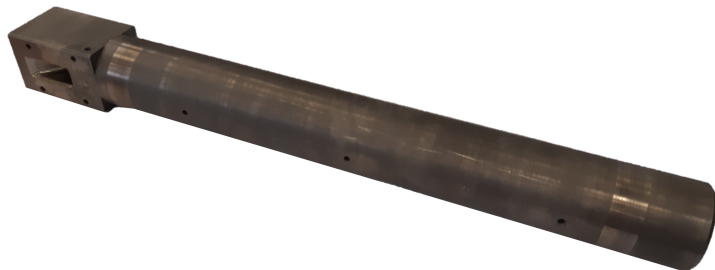
## MOULD

- Mould made by 2 halves (one upper and one lower) with approx. 22 cavities, for "Diamond Wire", realized by erosion in Collex steel inserts, 54 HRC hardened



## INJECTION CYLINDERS

- Injection cylinder b/58t45
- Bimetal injection cylinder d.22 v/69t22b
- Injection cylinder d.26 v/69t26
- Injection cylinder d.32 v/69t32
- Nitrited injection cylinder d.28 r2/8t28d
- Nitrited injection cylinder d.35 r2/8t35
- Nitrited injection cylinder d.40 b/58t40
- Nitrited injection cylinder d.45 b/58t45
- Nitrited injection cylinder b/58t35
- Injection cylinder r2/8t32
- Bimetal injection cylinder g3/134t40b
- Nitrited injection cylinder g3/134t35



## NOZZLE BODIES

- Nozzle body s/long channel valve d.28 hu/4/28bs
- Nozzle body s/long channel valve d.32 hu/4/32bs
- Nozzle body s/long channel valve d.35 hu/4/35bs
- Nozzle body s/long channel valve d.40 hu/4/40bs
- Nozzle body s/long channel valve d.50 hu/4/50bs
- Nozzle body s/valve d.32 hu/4/32s
- Nozzle body s/valve d.35 hu/4/35s
- Nozzle body s/valve d.50 hu/4/50s
- Nozzle body s/valve d.55 hu/4/55bs



## NOZZLES

- Nozzle s/long channel heating valve d28 hu/5/28bcs
- Nozzle s/long channel heating valve d32 hu/5/32bs
- Nozzle s/long channel heating valve d35 hu/5/35bs
- Nozzle s/long channel heating valve d35 hu/5/35bs
- Nozzle s/long channel heating valve d40 hu/5/40bs
- Nozzle s/long channel heating valve d45 hu/5/45bsvalvola
- Nozzle diam.32 long channel x30/20 hu/4/32bsp
- Nozzle long channel heating valve hu/5/28bsp
- Nozzle standard long channel hu/4/32b
- Ugello standard long channel hu/5/26
- Nozzle long channel heating valve d45 hu/5/45bs
- Nozzle s/heating valve d 40 hu/5/40s
- Nozzle s/heating valve d 45 hu/5/45s
- Nozzle special long channel heating valve hu/5/18b-spec
- Nozzle valve hu/7/26



## VITI COCLEA

- Screw d.28 r2/9t28r1/3
- Screw d.40 k110 g3/146t40b r.1/3
- Screw d.40 nitrided standard profile 1/3 (g3/146t40)
- Screw d.45 r1/2 b/66t45
- Screw d.45 r1/2 f/67t45
- Screw d.45 r1/2 stellite f/67t45s
- Screw d.50 k110 f/67t50b
- Screw d.50 k110 r1/2 standard profile (b/66t50b - d0048535)
- Screw d.50 r1/2 b/66t50
- Screw d40 1/3 g3/146t40r1/3
- Screw k110 hardened for thermosetting d.35
- Screw nitrided standard profile d.35 1/2 r2/9t35
- Screw nitrided standard profile d.40 1/2 b/66t40
- Screw nitrided standard profile d.45 1/2 b/66t45
- Screw nitrided standard profile 1/2 b/66t35
- Screw nitrided standard profile d.28 rapp. 1/2 r2/9t28
- Screw r. 1/2 d.26 v/73t26
- Screw r. 1/2 g3/146t45r1/2
- Screw v/73t32



## COLUMNS

- Press column s/23
- Press column sc/23
- Press column l. 1251 mm v/6b
- Press column l. 1151 mm v/6
- Press column l. 1411 mm s/23mc
- Press column l. 1436 mm s/23md
- Press column l. 1346 mm s/23a

